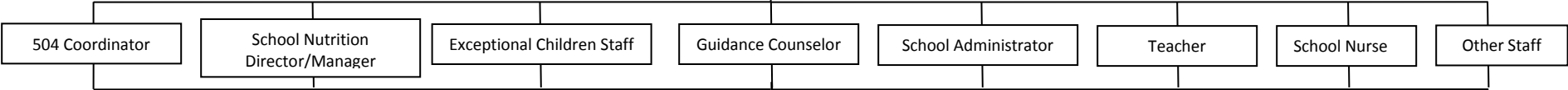


School is notified of a student with potential unique mealtime needs

Notification must be transferred to written form if not already:
▪ Email/Letter
▪ Referral
▪ Physician prescription
▪ Medical Statement

If school personnel are the first to identify potential unique mealtime needs, a meeting must be convened to discuss concerns with parent/guardian

Received by Agent of the School



School Administrator or Designee (e.g., 504 Coord.)

Has a Medical Statement for Students with Unique Mealtime Needs for School Meals been completed?

No

A Medical Statement for Students with Unique Mealtime Needs for School Meals must be completed and signed by the parent/guardian and a physician/medical authority.

School Administrator/Designee may need input from School Nutrition Director, EC Staff or School Nurse to determine if info is clear and substantive.

Maybe

Yes

Is the info clear and substantive?

No

Ensure School Nutrition Dir/Mgr has reviewed Medical Statement and determined if accommodations can be made outside of a disability determination/within existing meal pattern.

Yes

No

Yes

Convene School IEP/504 Team to review Medical Statement. Ensure School Nutrition is represented.

Convene team to review Medical Statement and determine if a *Child Find* obligation exists. Ensure School Nutrition is represented.

Consult with School Nurse. If needed, obtain clarifying information from physician/medical authority, who completed the Medical Statement